

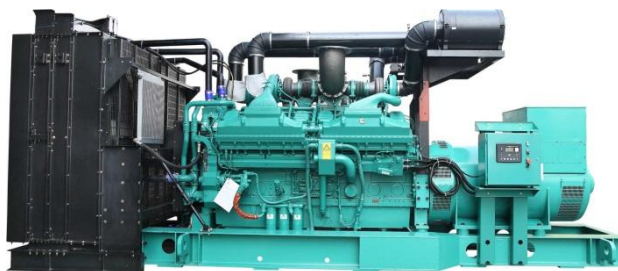
## DATA SHEET

DIESEL GENERATOR 650KW

MODEL#FDK-CG825/H1

50HZ/1500RPM

CUMMINS MODEL: VTA28-G6



### General Features:

- ♦ All qualified generator sets are subjected to a comprehensive performance test which includes 50% load, 70% load, 100% load, 110% load and to check, verify that all control systems, alarm and shut-down protection.
- ♦ Equipped with battery charger and 24V high performance maintenance-free lead-acid starting batteries and connecting cables.
- ♦ Stainless galvanized zinc plates with strong corrosion-proof.
- ♦ Vibration isolators between the engine/alternator and base frame.
- ♦ Equipped with industrial silencer and flexible exhaust hose.
- ♦ Designed to comply with ISO8528/GB2820.
- ♦ Powered by Cummins engine and coupled with Stamford alternator.
- ♦ Water jacket preheater, oil heater and double air cleaner, etc. are available.

### FDK Diesel Generator Set Data

Genset Model	FDK-CG825/H1	Engine Make	Cummins Original
Prime Power	600KW/750KVA	Engine Model	VTA28-G6
Standby Power	650KW/825KVA	Alternator model	Stamford LVI634B
Output Frequency / Rated speed	50Hz/1500rpm	Control System	DSE7320
Rated Voltage	230V/400V	Phase	Three

(1) **Prime power:** The rating is available for an unlimited of annual operating hours in variable load applications, in accordance with ISO8528-1.A 10% overload is available for a period of 1 hour within 12-hour period of operation, in accordance with ISO 3046-1.

(2) **Standby power:** The rating is applicable for supplying emergency power in variable load applications for up to 200 hours per year in accordance with ISO8528-1. Overload is not allowed.

(3) **Rated voltage:** available with customer requirement.

### Engine Specifications (DETAILED in APPENDIX)

Engine Model	VTA28-G6	Aspiration	Turbo-charged
Engine Manufacturer	Cummins ORIGINAL	Bore x Stroke (mm x mm)	140×152
Cylinder quantity	12	Displacement	28L
Cylinder Arrangement	40° Vee;	Compression Ratio	13.1:1
Cycle	4	Prime power / Speed (KW/RPM)	NO AVAILABLE
		Standby power/ Speed (KW/RPM)	733kw/1500



Type Injection System	Direct Injection Cummins PT	Fuel Consumption at 100% load (g/KWh)	226 at 1500rpm
Piston Speed	7.6m/s	Starter motor	DC24V
Friction Energy Output	58kw	Low idle	575-650pm
Total Lubrication System Capacity (L)	83	Coolant Capacity (L)	80

## Alternator Specifications

Alternator model	LVI634B	Number of phase	3
Alternator manufacturer	STAMFORD	Rated voltage	400V (Available with custom requirements)
Exciter type	Single bearing, Brushless, Self-excited	Power factor	0.8
Rated output prime power	750KVA	Voltage regulation NL-FL	≤±1%
Rated speed	1500 rpm	Insulation grade	H
Rated frequency	50Hz	Protection grade	IP23

**Alternator option: Leroy Somer, MECC, Marathon, Engga, Faraday**

## Control System DSE7320 (DETAILED in INSTRUCTION)

DSE7320 is an advanced control module based on micro-processor, containing all necessary functions for protection of the genset and the breaker control. It can monitor the mains supply, breaker control and automatically start the engine when the mains are abnormal. Accurately measure various operational parameters and display all values and alarms information on the LCD. In addition, the control module can automatically shut down the engine and indicate the engine failure.

### FEATURES

- ◆ Microprocessor control, with high stability and credibility.
- ◆ Monitoring and measuring operational parameters of the mains supply and genset.
- ◆ Indicating operation status, fault conditions, all parameters and alarms.
- ◆ Multiple protections; multiple parameters display, like pressure, temp. etc.
- ◆ Manual, automatic and remote work mode selectable.
- ◆ Real time clock for time and date display, overall runtime display, 250 log entries.
- ◆ Overall power output display.
- ◆ Integral speed/frequency detecting, telling status of start, rated operation, overspeed etc.
- ◆ Communication with PC via RS485 OR RS232 interface, using MODBUS protocol.

## Soundproof Enclosure Specification

FDK silent generator is designed by professional acoustic engineers based on years of experience. Now we can make the noise of the generator less than 80-85dB(A) at 1m, or 70-75dB(A) at 7m, 60-65dB(A) at 15m.

### FEATURES

- ◆ Multi-way air intake and exhaust guarantee the power performance of the generator.
- ◆ Large-scale impedance combined type silencer effectively reduce noise of the generator.
- ◆ Internal high performance rubber damper and flexible materials reduce vibration.
- ◆ Base mounted fuel tank supports the generator running for 8 hours.



## Optional

Generator set	Alternator	Low environment Temp	ATS
<input type="checkbox"/> Open generator set <input type="checkbox"/> Silent generator set <input type="checkbox"/> Trailer generator set <input type="checkbox"/> ABB MCCB circuit breaker	<input type="checkbox"/> Stamford <input type="checkbox"/> Marathon <input type="checkbox"/> Mecc Alte <input type="checkbox"/> Leroy Somer <input type="checkbox"/> Farady <input type="checkbox"/> Engga	<input type="checkbox"/> Water heater <input type="checkbox"/> Oil heater <input type="checkbox"/> Battery heater	<input type="checkbox"/> CHINT <input type="checkbox"/> SCHNEIDER <input type="checkbox"/> ABB
Fuel system	Control system	Voltage	Synchronized system
<input type="checkbox"/> 12hrs base tank <input type="checkbox"/> 24hrs base tank <input type="checkbox"/> Dual wall base fuel tank <input type="checkbox"/> Outside fuel tank	<input type="checkbox"/> AMF function <input type="checkbox"/> ATS control cabinet <input type="checkbox"/> DSE7320 <input type="checkbox"/> DSE7510 <input type="checkbox"/> GU620A	<input type="checkbox"/> 415/240V <input type="checkbox"/> 400/230V <input type="checkbox"/> 380/220V <input type="checkbox"/> 220/127V <input type="checkbox"/> 200/115V	<input type="checkbox"/> CHINT Cabinet <input type="checkbox"/> SCHNEIDER Cabinet <input type="checkbox"/> DSE8610 Module <input type="checkbox"/> COMAQ Module <input type="checkbox"/> DEIF Module

## Dimension & Weight

### Open

Overall Size: L×W×H (mm)	3450×1550×2120
Weight (kg)	6700

### Soundproof Version

Overall Size: L×W×H (mm)	5250×1900×2550
Weight (kg)	8200

## Sales Promises

- ◆ FDK provides a full line of brand new and high quality products. Each and every unit is strictly factory tested before shipment.
- ◆ Quality warranty is according to our standard conditions: 12 months from BL date or 1000 running hours, whichever comes first.
- ◆ Service and parts are available from FDK or distributors in your location.
- ◆ FDK guarantee use **BRAND NEW & GENUINE MACHINE.**





# VTA28-G6 Advantage Data Sheet

Cummins Engine Company, Inc. Columbus, Indiana 47201

Curve Number: <b>FR-5196</b>	Engine Critical Parts List: <b>CPL 8278</b>	Date: <b>27Apr04</b>
Displacement : <b>28.0 litre (1710 in<sup>3</sup>)</b>	Bore : <b>140 mm (5.5 in.)</b>	Stroke : <b>152 mm (6.0 in.)</b>
No. of Cylinders : <b>12</b>	Aspiration : <b>Turbocharged and Aftercooled</b>	

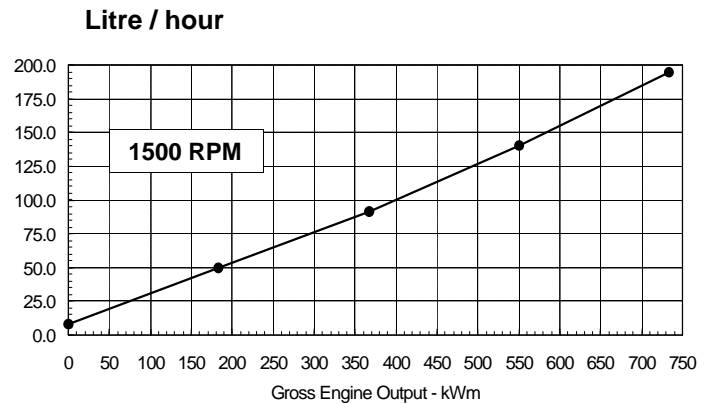
**•• DRAFT ••**

**Emergency Standby Ratings for application in Corporate Generator Sets Only**

Engine Speed	Standby Power	
RPM	kWm	BHP
<b>1500</b>	<b>733</b>	<b>982</b>

## Engine Performance Data @ 1500 RPM

OUTPUT POWER			FUEL CONSUMPTION			
%	kWm	BHP	kg/ kWm·h	lb/ BHP·h	Litre/ hour	U.S. Gal/ hour
<b>STANDBY POWER</b>						
100	733	982	0.226	0.371	195	51.3
75	550	737	0.216	0.354	140	36.7
50	367	491	0.211	0.346	91	23.9
25	183	246	0.232	0.381	50	13.2



**CONVERSIONS:** (Litres = U.S. Gal x 3.785) (Engine kWm = BHP x 0.746) (U.S. Gal = Litres x 0.2642) (Engine BHP = Engine kWm x 1.34)

Data shown above represent gross engine performance capabilities obtained and corrected in accordance with ISO-3046 conditions of 100 kPa (29.53 in Hg) barometric pressure [110 m (361 ft) altitude], 25 °C (77 °F) air inlet temperature, and relative humidity of 30% with No. 2 diesel or a fuel corresponding to ASTM D2. See reverse side for application rating guidelines.

The fuel consumption data is based on No. 2 diesel fuel weight at 0.85 kg/Litre (7.1 lbs/U.S. gal).

Power output curves are based on the engine operating with fuel system, water pump and lubricating oil pump; not included are battery charging alternator, fan, optional equipment and driven components.



# VTA28-G6 Advantage Data Sheet

Cummins Engine Company, Inc. Columbus, Indiana 47201

•• DRAFT ••

## POWER RATING APPLICATION GUIDELINES FOR EMERGENCY STANDBY ENGINES FOR APPLICATION IN CORPORATE GENERATOR SETS ONLY

These guidelines have been formulated to ensure proper application of generator drive engines in Cummins corporate generator set installations. Generator drive engines are not designed for and shall not be used in variable speed D.C. generator set applications.

Applicable for supplying emergency power for the duration of the utility power outage. No overload capability is available for this standby rating. Under no condition is an engine allowed to operate in parallel with the public utility at the Emergency Standby Power rating. This rating should be applied where reliable utility power is available. An emergency standby rated engine should be sized for a maximum of an **70%** typical load factor and **200 hours** of operation per year. This includes a maximum of **1 hour** in a **12 hour** period at the Emergency Standby Power rating. Emergency Standby rating should never be applied except in true emergency power outages. Negotiated power outages contracted with a utility company are not considered an emergency.

### Reference Standards:

BS-5514 and DIN-6271 standards are based on ISO-3046.

### Operation At Elevated Temperature And Altitude:

For corporate generator sets using corporate cooling system design, this generator set can be used at:

1500 RPM up to 3280 ft (1000 m) and 104° F (40° C) ambient without power deration. For sustained operation above these conditions, derate by 4% per 1000 ft (300 m) and 2% per 10° F (4% per 11° C).



# VTA28-G6 Advantage Data Sheet

Cummins Engine Company, Inc. Columbus, Indiana 47201

## Cummins Engine Company, Inc. Engine Data Sheet

**ENGINE MODEL :** VTA28-G6

**CONFIGURATION NUMBER :** D153103DX02

**DATA SHEET :** DS-4886-B

**DATE :** 27Apr04

**PERFORMANCE CURVE :** FR-5196

**INSTALLATION DIAGRAM**

- Fan to Flywheel : 3626364
- Heat Exchanger Cooled : N.A.

**CPL NUMBER**

- Engine Critical Parts List : 8278

**GENERAL ENGINE DATA**

Type.....	4-Cycle; 40° Vee; 12-Cylinder Diesel
Aspiration.....	Turbocharged and Aftercooled
Bore x Stroke .....	5.5 x 6.0 (140 x 152)
Displacement .....	1710 (28.0)
Compression Ratio .....	13.1 : 1
Dry Weight	
Fan to Flywheel Engine .....	6395 (2900)
Wet Weight	
Fan to Flywheel Engine .....	6725 (3050)
Moment of Inertia of Rotating Components	
• with FW 5013 Flywheel .....	256 (10.8)
Center of Gravity from Rear Face of Flywheel Housing (FH 5020).....	33.7 (856)
Center of Gravity Above Crankshaft Centerline.....	14.0 (356)
Maximum Static Loading at Rear Main Bearing .....	1950 (885)

**ENGINE MOUNTING**

Maximum Bending Moment at Rear Face of Block.....	1000 (1356)
---	-------------

**EXHAUST SYSTEM**

Maximum Back Pressure .....	3 (76)
-----------------------------	--------

**AIR INDUCTION SYSTEM**

Maximum Intake Air Restriction	
• with Dirty Filter Element .....	25 (635)
• with Normal Duty Air Cleaner and Clean Filter Element.....	10 (254)
• with Heavy Duty Air Cleaner and Clean Filter Element .....	15 (381)

**COOLING SYSTEM**

Coolant Capacity — Engine Only.....	21.2 (80)
Maximum Coolant Friction Head External to Engine — 1500 rpm.....	8 (55)
Maximum Static Head of Coolant Above Engine Crank Centerline .....	60 (18.3)
Standard Thermostat (Modulating) Range.....	180 - 200 (82 - 93)
Minimum Pressure Cap.....	10 (69)
Maximum Top Tank Temperature for Standby Power.....	220 (104)

**LUBRICATION SYSTEM**

Oil Pressure @ Idle Speed.....	20 (138)
@ Governed Speed.....	50 - 90 (345 - 621)
Maximum Oil Temperature .....	250 (121)
Oil Capacity with OP 5127 Oil Pan : High - Low.....	18 - 16 (68 - 61)
Total System Capacity (including Bypass Filter).....	21.9 (83)
Angularity of OP 5127 Oil Pan — Front Down.....	30°
— Front Up.....	35°
— Side to Side .....	35°



# VTA28-G6 Advantage Data Sheet

Cummins Engine Company, Inc. Columbus, Indiana 47201

## FUEL SYSTEM

Type Injection System .....	Direct Injection Cummins PT
Maximum Restriction at PT Fuel Injection Pump — with Clean Fuel Filter..... — in Hg (mm Hg)	4.0 (102)
— with Dirty Fuel Filter..... — in Hg (mm Hg)	8.0 (203)
Maximum Allowable Head on Injector Return Line (Consisting of Friction Head and Static Head)..... — in Hg (mm Hg)	6.5 (165)
Maximum Fuel Flow to Injection Pump .....	118 (448)

## ELECTRICAL SYSTEM

Cranking Motor (Heavy Duty, Positive Engagement)..... — volt	24
Battery Charging System, Negative Ground..... — ampere	35
Maximum Allowable Resistance of Cranking Circuit..... — ohm	0.002
Minimum Recommended Battery Capacity	
• Cold Soak @ 50 °F (10 °C) and Above..... — 0°F CCA	1200
• Cold Soak @ 32 °F to 50 °F (0 °C to 10 °C)..... — 0°F CCA	1280
• Cold Soak @ 0 °F to 32 °F (-18 °C to 0 °C)..... — 0°F CCA	1800

## COLD START CAPABILITY

Minimum Ambient Temperature for Aided (with Coolant Heater) Cold Start within 10 seconds..... — °F (°C)	50 (10)
Minimum Ambient Temperature for Unaided Cold Start..... — °F (°C)	40 (4)

## PERFORMANCE DATA

- All data is based on:
- Engine operating with fuel system, water pump, lubricating oil pump, air cleaner and exhaust silencer; not included are battery charging alternator, fan, and optional driven components.
  - Engine operating with fuel corresponding to grade No. 2-D per ASTM D975.
  - ISO 3046, Part 1, Standard Reference Conditions of:
 

Barometric Pressure : 100 kPa (29.53 in Hg)	Air Temperature : 25 °C (77 °F)
Altitude : 110 m (361 ft)	Relative Humidity : 30%

Steady State Stability Band at any Constant Load .....	— %	+/- 0.25
Estimated Free Field Sound Pressure Level of a Typical Generator Set;		
Excludes Exhaust Noise; at Rated Load and 7.5 m (24.6 ft); [1800 / 1500 RPM]..... — dBA		97 / 97
Exhaust Noise at 1 m Horizontally from C <sub>L</sub> of Exhaust Pipe Outlet Upwards at 45° [1800 / 1500 RPM]..... — dBA		112 / 112

### STANDBY 50 hz

Governed Engine Speed..... — rpm	1500
Engine Idle Speed..... — rpm	575 - 650
Gross Engine Power Output..... — BHP (kW <sub>m</sub> )	982 (733)
Brake Mean Effective Pressure..... — psi (kPa)	304 (2096)
Piston Speed..... — ft / min (m / s)	1500 (7.6)
Friction Horsepower..... — HP (kW <sub>m</sub> )	78 (58)
Engine Water Flow at Stated Friction Head External to Engine:	
• 3 psi Friction Head..... — US gpm (Litre / s)	194 (12.2)
• Maximum Friction Head..... — US gpm (Litre / s)	173 (10.9)

### Engine Data with Dry Type Exhaust Manifold

Intake Air Flow..... — cfm (Litre / s)	1940 (914)
Exhaust Gas Temperature..... — °F (°C)	915 (489)
Exhaust Gas Flow..... — cfm (Litre / s)	4690 (2212)
Radiated Heat to Ambient..... — BTU / min (kW <sub>m</sub> )	5140 (90)
Heat Rejection to Coolant..... — BTU / min (kW <sub>m</sub> )	32700 (575)
Heat Rejection to Exhaust..... — BTU / min (kW <sub>m</sub> )	30300 (532)

N.A. - Data is Not Available  
 N/A - Not Applicable to this Engine  
 TBD - To Be Determined

•• DRAFT ••

**ENGINE MODEL : VTA28-G6**  
**DATA SHEET : DS-4886-B**  
**DATE : 27Apr04**  
**CURVE NO. : FR-5196**