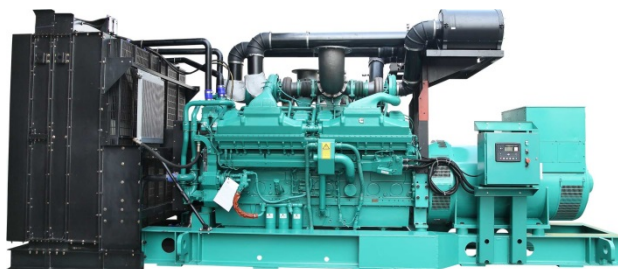


## DATA SHEET

DIESEL GENERATOR 1320KW  
 MODEL#FDK-CG1320E/H1  
 50HZ/1500RPM  
 CUMMINS MODEL: KTA50-GS8



### General Features:

- ♦ All qualified generator sets are subjected to a comprehensive performance test which includes 50% load, 70% load, 100% load, 110% load and to check, verify that all control systems, alarm and shut-down protection.
- ♦ Equipped with battery charger and 24V high performance maintenance-free lead-acid starting batteries and connecting cables.
- ♦ Stainless galvanized zinc plates with strong corrosion-proof.
- ♦ Vibration isolators between the engine/alternator and base frame.
- ♦ Equipped with industrial silencer and flexible exhaust hose.
- ♦ Designed to comply with ISO8528/GB2820.
- ♦ Powered by Cummins engine and coupled with Stamford alternator.
- ♦ Water jacket preheater, oil heater and double air cleaner, etc. are available.

### FDK Diesel Generator Set Data

Genset Model	FDK-CG1320E/H1	Engine Make	Cummins ONAN
Prime Power	1200KW/1500KVA	Engine Model	KTA50-GS8
Standby Power	1320KW/1650KVA	Alternator model	Stamford PI734C
Output Frequency / Rated speed	50Hz/1500rpm	Control System	DSE7320
Rated Voltage	230V/400V	Phase	Three

(1) **Prime power:** The rating is available for an unlimited of annual operating hours in variable load applications, in accordance with ISO8528-1.A 10% overload is available for a period of 1 hour within 12-hour period of operation, in accordance with ISO 3046-1.

(2) **Standby power:** The rating is applicable for supplying emergency power in variable load applications for up to 200 hours per year in accordance with ISO8528-1. Overload is not allowed.

(3) **Rated voltage:** available with customer requirement.

### Engine Specifications (DETAILED in APPENDIX)

Engine Model	KTA50-GS8	Aspiration	Turbo-charged
Engine Manufacturer	Cummins ORIGINAL INDIA	Bore x Stroke (mm x mm)	159x159
Cylinder quantity	16	Displacement	50.3L
Cylinder Arrangement	60° Vee	Compression Ratio	14.9:1
Cycle	4	Prime power / Speed (KW/RPM)	1287kw/1500
		Standby power/ Speed (KW/RPM)	1429kw/1500



Type Injection System	Cummins PT Direct Injection	Fuel Consumption at 100% load (g/KWh)	204 at 1500rpm
Piston Speed	7.9m/s	Starter motor	DC24V
Friction Energy Output	116kw	Low idle	725-775rpm
Total Lubrication System Capacity	204L	Coolant Capacity (L)	165

## Alternator Specifications

Alternator model	PI734C	Number of phase	3
Alternator manufacturer	STAMFORD	Rated voltage	400V (Available with custom requirements)
Exciter type	Single bearing, Brushless, Self-excited	Power factor	0.8
Rated output prime power	1550KVA	Voltage regulation NL-FL	±1%
Rated speed	1500 rpm	Insulation grade	H
Rated frequency	50Hz	Protection grade	IP23

**Alternator option: Leroy Somer, MECC, Marathon, Engga, Faraday**

## Control System DSE7320 (DETAILED in INSTRUCTION)

DSE7320 is an advanced control module based on micro-processor, containing all necessary functions for protection of the genset and the breaker control. It can monitor the mains supply, breaker control and automatically start the engine when the mains are abnormal. Accurately measure various operational parameters and display all values and alarms information on the LCD. In addition, the control module can automatically shut down the engine and indicate the engine failure.

### FEATURES

- ♦ Microprocessor control, with high stability and credibility.
- ♦ Monitoring and measuring operational parameters of the mains supply and genset.
- ♦ Indicating operation status, fault conditions, all parameters and alarms.
- ♦ Multiple protections; multiple parameters display, like pressure, temp. etc.
- ♦ Manual, automatic and remote work mode selectable.
- ♦ Real time clock for time and date display, overall runtime display, 250 log entries.
- ♦ Overall power output display.
- ♦ Integral speed/frequency detecting, telling status of start, rated operation, overspeed etc.
- ♦ Communication with PC via RS485 OR RS232 interface, using MODBUS protocol.

## Soundproof Enclosure Specification

FDK silent generator is designed by professional acoustic engineers based on years of experience. Now we can make the noise of the generator less than 80-85dB(A) at 1m, or 70-75dB(A) at 7m, 60-65dB(A) at 15m.

### FEATURES

- ♦ Multi-way air intake and exhaust guarantee the power performance of the generator.
- ♦ Large-scale impedance combined type silencer effectively reduce noise of the generator.
- ♦ Internal high performance rubber damper and flexible materials reduce vibration.
- ♦ Base mounted fuel tank supports the generator running for 8 hours.



ISO9001:2008

FDK reserves the right to change the specifications and designs without notice.

## Optional

Generator set	Alternator	Low environment Temp	ATS
<input type="checkbox"/> Open generator set <input type="checkbox"/> Silent generator set <input type="checkbox"/> Trailer generator set <input type="checkbox"/> ABB MCCB circuit breaker	<input type="checkbox"/> Stamford <input type="checkbox"/> Marathon <input type="checkbox"/> Mecc Alte <input type="checkbox"/> Leroy Somer <input type="checkbox"/> Farady <input type="checkbox"/> Engga	<input type="checkbox"/> Water heater <input type="checkbox"/> Oil heater <input type="checkbox"/> Battery heater	<input type="checkbox"/> CHINT <input type="checkbox"/> SCHNEIDER <input type="checkbox"/> ABB
Fuel system	Control system	Voltage	Synchronized system
<input type="checkbox"/> 12hrs base tank <input type="checkbox"/> 24hrs base tank <input type="checkbox"/> Dual wall base fuel tank <input type="checkbox"/> Outside fuel tank	<input type="checkbox"/> AMF function <input type="checkbox"/> ATS control cabinet <input type="checkbox"/> DSE7320 <input type="checkbox"/> DSE7510 <input type="checkbox"/> GU620A	<input type="checkbox"/> 415/240V <input type="checkbox"/> 400/230V <input type="checkbox"/> 380/220V <input type="checkbox"/> 220/127V <input type="checkbox"/> 200/115V	<input type="checkbox"/> CHINT Cabinet <input type="checkbox"/> SCHNEIDER Cabinet <input type="checkbox"/> DSE8610 Module <input type="checkbox"/> COMAQ Module <input type="checkbox"/> DEIF Module

## Dimension & Weight

### Open

Overall Size: LxWxH (mm)	5100x2255x2565
Weight (kg)	11400

### Soundproof Version

Overall Size: LxWxH (mm)	20FT CONTAINER
Weight (kg)	21000

## Sales Promises

- ◆ FDK provides a full line of brand new and high quality products. Each and every unit is strictly factory tested before shipment.
- ◆ Quality warranty is according to our standard conditions: 12 months from BL date or 1000 running hours, whichever comes first.
- ◆ Service and parts are available from FDK or distributors in your location.
- ◆ FDK guarantee use **BRAND NEW & GENUINE MACHINE.**





# KTA50-GS8 Advantage Data Sheet

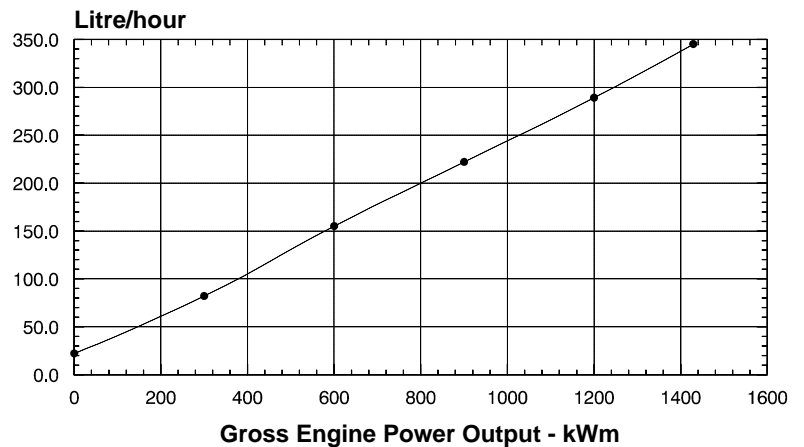
Cummins Inc. Columbus, Indiana 47201

Curve Number: <b>FR-6261</b>	Engine Critical Parts List: <b>2354 (1P/2L), 2859 (2P/2L)</b>	Date: <b>21Jan02</b>
Displacement : <b>50.3 litre (3067 in<sup>3</sup>)</b>	Bore : <b>159 mm (6.25 in.)</b>	Stroke : <b>159 mm (6.25)</b>
No. of Cylinders : <b>16</b>	Aspiration : <b>Turbocharged and Low Temperature Aftercooled</b>	

Engine Speed RPM	Overload Power Rating		Prime Power Rating	
	kWm	BHP	kWm	BHP
1500	1429	1915	1287	1725
1800	-----	-----	-----	-----

## Engine Performance Data @ 1500 RPM

OUTPUT POWER			FUEL CONSUMPTION			
%	kWm	BHP	kg/ kWm·h	lb/ BHP·h	litre/ hour	U.S. Gal/ hour
<b>OVERLOAD POWER</b>						
100	1429	1915	0.206	0.338	345	91.2
<b>PRIME POWER</b>						
100	1287	1725	0.204	0.336	309	81.6
75	965	1294	0.210	0.345	238	62.8
50	644	863	0.221	0.363	167	44.1
25	322	431	0.232	0.383	88	23.3



## Engine Performance Data @ 1800 RPM

**Not Available at 1800 RPM**

**Not Available at 1800 RPM**

**CONVERSIONS:** (Litres = U.S. Gal x 3.785) (kWm = BHP x 0.746) (U.S. Gal = Litres x 0.2642) (BHP = Engine kWm x 1.34)

Data shown above represent gross engine performance capabilities obtained and corrected in accordance with ISO-3046 conditions of 100 kPa (29.53 in. Hg.) barometric pressure [110 m (361 ft.) altitude], 25°C (77°F) air inlet temperature, and relative humidity of 30% with No. 2 diesel or a fuel corresponding to ASTM D2. See reverse side for application rating guidelines.

The fuel consumption data is based on No. 2 diesel fuel weight at 0.85 kg/litre (7.1 lbs./U.S. gal).

Power output curves are based on the engine operating with fuel system, water pump and lubricating oil pump; not included are battery charging alternator, fan, optional equipment and driven components.

*D.K. Trueblood*



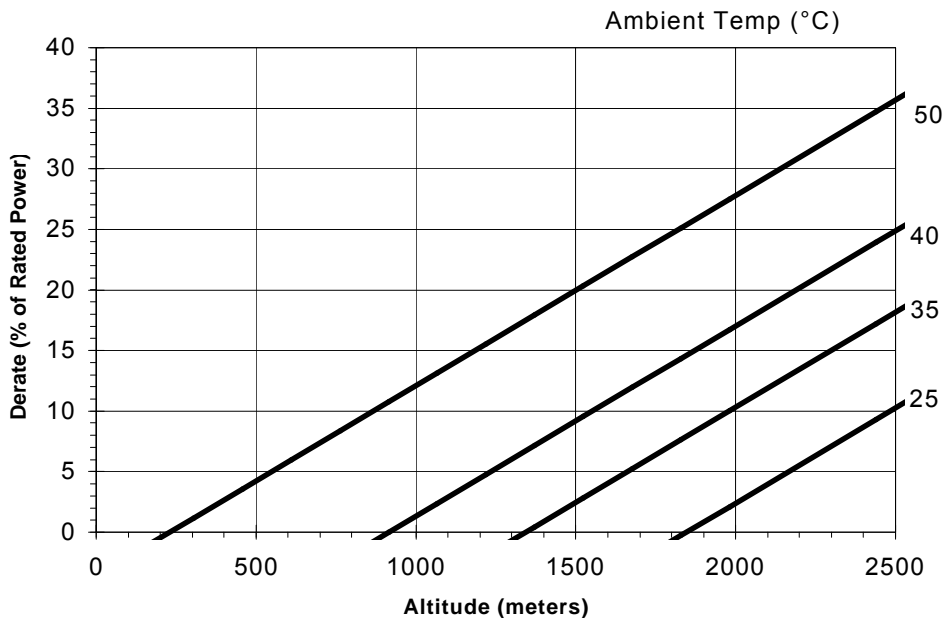
# KTA50-GS8 Advantage Data Sheet

Cummins Inc. Columbus, Indiana 47201

## POWER RATING APPLICATION GUIDELINES FOR EMERGENCY STANDBY ENGINES FOR APPLICATION IN CORPORATE GENERATOR SETS ONLY

These guidelines have been formulated to ensure proper application of generator drive engines in Cummins corporate generator set installations. Generator drive engines are not designed for and shall not be used in variable speed D.C. generator set applications.

Applicable for supplying emergency power for the duration of the utility power outage. No overload capability is available for this standby rating. Under no condition is an engine allowed to operate in parallel with the public utility at the Emergency Standby Power rating. This rating should be applied where reliable utility power is available. An emergency standby rated engine should be sized for a maximum of an **70%** typical load factor and **200 hours** of operation per year. This includes a maximum of **1 hour** in a **12 hour** period at the Emergency Standby Power rating. Emergency Standby rating should never be applied except in true emergency power outages. Negotiated power outages contracted with a utility company are not considered an emergency.



### Reference Standards:

BS-5514 and DIN-6271 standards are based on ISO-3046.

### Operation At Elevated Temperature And Altitude:

For sustained operation above these conditions, derate by an additional 4.6% per 300m (1000ft) and 12% per 10°C (18°F)

**NOTE:** Derates shown are based on 15" H<sub>2</sub>O air intake restriction and 2" Hg exhaust back pressure.



# KTA50-GS8 Advantage Data Sheet

Cummins Inc. Columbus, Indiana 47201

ENGINE MODEL : **KTA50-GS8**

CONFIGURATION NUMBER : D283022DX02

DATA SHEET : DS-6261

DATE : 21Jan02

PERFORMANCE CURVE : FR-6261

### INSTALLATION DIAGRAM

- Fan to Flywheel (1P/2L) : 3170289
- Fan to Flywheel (2P/2L) : 3626419

### CPL NUMBER

- Engine Critical Parts List (1P/2L) : 2354
- Engine Critical Parts List (2P/2L) : 2859

## GENERAL ENGINE DATA

Type.....	4-Cycle; 60° Vee; 16-Cylinder Diesel
Aspiration.....	Turbocharged & Low Temp. Aftercooled
Bore x Stroke .....	6.25 x 6.25 (159 x 159)
Displacement .....	3067 (50.3)
Compression Ratio.....	14.9 : 1
Dry Weight	
Fan to Flywheel Engine .....	— lb (kg)                      11820              (5360)
Wet Weight	
Fan to Flywheel Engine .....	— lb (kg)                      12485              (5662)
Moment of Inertia of Rotating Components	
• with FW 6009 Flywheel .....	— lb <sub>m</sub> • ft <sup>2</sup> (kg • m <sup>2</sup> )              271              (11.4)
• with FW 6017 Flywheel.....	— lb <sub>m</sub> • ft <sup>2</sup> (kg • m <sup>2</sup> )              515              (21.7)
Center of Gravity from Rear Face of Flywheel Housing (FH 6024).....	— in (mm)                      47.5              (1206)
Center of Gravity Above Crankshaft Centerline.....	— in (mm)                      11.0              (279)
Maximum Static Loading at Rear Main Bearing.....	— lb (kg)                      2000              (908)

## ENGINE MOUNTING

Maximum Bending Moment at Rear Face of Block.....	— lb • ft (N • m)                      4500              (6100)
---	---

## EXHAUST SYSTEM

Maximum Back Pressure .....	— in Hg (mm Hg)                      2              (51)
-----------------------------	--

## AIR INDUCTION SYSTEM

Maximum Intake Air Restriction	
• with Dirty Filter Element .....	— in H <sub>2</sub> O (mm H <sub>2</sub> O)                      25              (635)
• with Clean Filter Element .....	— in H <sub>2</sub> O (mm H <sub>2</sub> O)                      15              (381)

## COOLING SYSTEM (Low Temperature Aftercooling)

Coolant Capacity — Engine Only.....	— US gal (liter)                      43.5              (165)
Maximum Coolant Friction Head External to Engine	
— 1500 rpm [High Flow] .....	— psi (kPa)                      10              (70)
— 1500 rpm [Low Flow].....	— psi (kPa)                      5              (35)
Maximum Static Head of Coolant Above Engine Crank Centerline.....	— ft (m)                      60              (18.3)
Standard Thermostat Modulating Range	
— High Flow (Jacket) .....	— °F (°C)                      180 - 200              (82 - 93)
— Low Flow (Aftercooler).....	— °F (°C)                      150 - 175              (66 - 79)
Minimum Pressure Cap (For Cooling Systems with less than 2 m [6 ft.] Static Head) .....	— psi (kPa)                      14              (96)
Maximum Top Tank Temperature for Overload Power / Prime Power.....	— °F (°C)                      220 / 212              (104 / 100)
Target Coolant Inlet Temperature to Aftercoolers @ 77 °F (25 °C) Ambient .....	— °F (°C)                      130              (55)
Maximum Coolant Temperature to Aftercoolers — Overload Power / Prime Power.....	— °F (°C)                      160 / 150              (71 / 66)

## LUBRICATION SYSTEM

Oil Pressure @ Idle Speed.....	— psi (kPa)                      20              (138)
@ Governed Speed.....	— psi (kPa)                      50 - 70              (345 - 483)
Maximum Oil Temperature .....	— °F (°C)                      250              (121)
Oil Capacity with OP 6027 Oil Pan : High - Low.....	— US gal (liter)                      47 - 39              (178 - 148)
Total System Capacity (Including Bypass Filter).....	— US gal (liter)                      54              (204)

## FUEL SYSTEM

Type Injection System .....	Direct Injection Cummins PT
Maximum Restriction at PT Fuel Injection Pump — with Clean Fuel Filter.....	— in Hg (mm Hg)                      4.0              (102)
— with Dirty Fuel Filter.....	— in Hg (mm Hg)                      8.0              (203)
Maximum Allowable Head on Injector Return Line	
(Consisting of Friction Head and Static Head)	
.....	— in Hg (mm Hg)                      6.5              (165)
Maximum Fuel Flow to Injection Pump.....	— US gph (liter / hr)                      151              (570)



# KTA50-GS8 Advantage Data Sheet

Cummins Inc. Columbus, Indiana 47201

## ELECTRICAL SYSTEM

Cranking Motor (Heavy Duty, Positive Engagement) .....	— volt	24
Battery Charging System, Negative Ground .....	— ampere	35
Maximum Allowable Resistance of Cranking Circuit .....	— ohm	0.002
Minimum Recommended Battery Capacity		
• Cold Soak @ 50°F (10°C) and Above .....	— 0°F CCA	1280
• Cold Soak @ 32°F to 50°F (0°C to 10°C) .....	— 0°F CCA	1800
• Cold Soak @ 0°F to 32°F (-18°C to 0°C) .....	— 0°F CCA	1800

## COLD START CAPABILITY

Minimum Ambient Temperature for Aided (with Coolant Heater) Cold Start within 10 seconds .....	— °F (°C)	50	(10)
Minimum Ambient Temperature for Unaided Cold Start .....	— °F (°C)	45	(7)

## PERFORMANCE DATA

- All data is based on:
- Engine operating with fuel system, water pump, lubricating oil pump, air cleaner and exhaust silencer; not included are battery charging alternator, fan, and optional driven components.
  - Engine operating with fuel corresponding to grade No. 2-D per ASTM D975.
  - ISO 3046, Part 1, Standard Reference Conditions of:
 

Barometric Pressure	: 100 kPa (29.53 in Hg)	Air Temperature	: 25 °C (77 °F)
Altitude	: 110 m (361 ft)	Relative Humidity	: 30%

Steady State Stability Band at any Constant Load .....	— %	+/- 0.25
Estimated Free Field Sound Pressure Level of a Typical Generator Set;		
Excludes Exhaust Noise; at Rated Load and 7.5 m (24.6 ft); 1500 rpm .....	— dBA	92.4
Exhaust Noise at 1 m Horizontally from Centerline of Exhaust Pipe Outlet Upwards at 45° .....	— dBA	N.A.

Governed Engine Speed .....	— rpm
Engine Idle Speed .....	— rpm
Gross Engine Power Output .....	— BHP (kW <sub>m</sub> )
Brake Mean Effective Pressure .....	— psi (kPa)
Piston Speed .....	— ft / min (m / s)
Friction Horsepower .....	— HP (kW <sub>m</sub> )

### Engine Data with Dry Type Exhaust Manifold

Intake Air Flow .....	— cfm (liter / s)
Exhaust Gas Temperature .....	— °F (°C)
Exhaust Gas Flow .....	— cfm (liter / s)
Air to Fuel Ratio .....	— air : fuel
Radiated Heat to Ambient .....	— BTU / min (kW <sub>m</sub> )
Heat Rejection to Exhaust .....	— BTU / min (kW <sub>m</sub> )

### Additional Engine Aftercooler Data (2 Pump / 2 Loop)

Engine Jacket Coolant Flow at Stated Friction Head External to Engine:	
• 4 psi Friction Head .....	— US gpm (liter / s)
• Maximum Friction Head .....	— US gpm (liter / s)
Heat Rejection to Coolant (Aftercooler) .....	— BTU / min (kW <sub>m</sub> )
Heat Rejection to Coolant (Engine) .....	— BTU / min (kW <sub>m</sub> )
Aftercooler Coolant Flow at Stated Friction Head External to Engine:	
• 2 psi Friction Head .....	— US gpm (liter / s)
• Maximum Friction Head .....	— US gpm (liter / s)

### Additional Engine Aftercooler Data (1 Pump / 2 Loop)

Engine Jacket Coolant Flow at Stated Friction Head External to Engine:	
• 4 psi Friction Head .....	— US gpm (liter / s)
• Maximum Friction Head .....	— US gpm (liter / s)
Heat to be Rejected by Low Temperature Radiator* .....	— BTU / min (kW <sub>m</sub> )
Heat to be Rejected by Jacket Water Radiator* .....	— BTU / min (kW <sub>m</sub> )
Aftercooler Coolant Flow at Stated Friction Head External to Engine:	
• 2 psi Friction Head .....	— US gpm (liter / s)
• Maximum Friction Head .....	— US gpm (liter / s)

	<u>OVERLOAD POWER</u>		<u>PRIME POWER</u>	
	1500		1500	
	725 - 775		725 - 775	
	1915 (1429)		1725 (1286)	
	330 (2275)		299 (2062)	
	1562 (7.9)		1562 (7.9)	
	155 (116)		155 (116)	
	3500 (1655)		3350 (1581)	
	950 (510)		930 (499)	
	9210 (4350)		8555 (4038)	
	23.2 : 1		24.5 : 1	
<b>Not Available at 1800 RPM</b>	12000 (210)		10700 (299)	
	54200 (954)		47500 (835)	
	440 (27.8)		440 (27.8)	
	400 (25.2)		400 (25.2)	
	15600 (275)		12600 (221)	
	35000 (615)		32500 (571)	
	100 (6.3)		100 (6.3)	
	95 (6.0)		95 (6.0)	
	352 (22.2)		352 (22.2)	
	320 (20.2)		320 (20.2)	
	30400 (535)		32500 (571)	
	22030 (390)		12250 (215)	
	85 (5.4)		85 (5.4)	
	80 (5.0)		80 (5.0)	

\* See AEB 90.39 1 Pump / 2 Loop KTA50-G8/9 system.

**N.A.** - Data is Not Available  
**N/A** - Not Applicable to this Engine  
**TBD** - To Be Determined

**ENGINE MODEL :** KTA50-GS8  
**DATA SHEET :** DS-6261  
**CURVE NO. :** FR-6261