

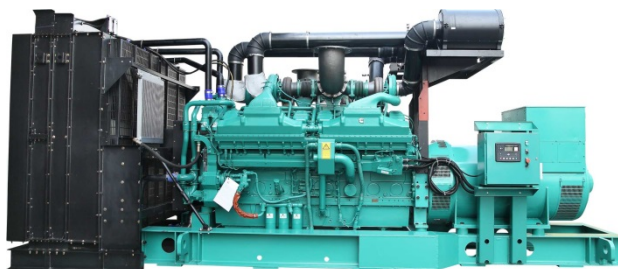
## DATA SHEET

DIESEL GENERATOR 1000KW

MODEL#FDK-CG1000/H1

50HZ/1500RPM

CUMMINS MODEL: KTA38-G9



### General Features:

- ♦ All qualified generator sets are subjected to a comprehensive performance test which includes 50% load, 70% load, 100% load, 110% load and to check, verify that all control systems, alarm and shut-down protection.
- ♦ Equipped with battery charger and 24V high performance maintenance-free lead-acid starting batteries and connecting cables.
- ♦ Stainless galvanized zinc plates with strong corrosion-proof.
- ♦ Vibration isolators between the engine/alternator and base frame.
- ♦ Equipped with industrial silencer and flexible exhaust hose.
- ♦ Designed to comply with ISO8528/GB2820.
- ♦ Powered by Cummins engine and coupled with Stamford alternator.
- ♦ Water jacket preheater, oil heater and double air cleaner, etc. are available.

### FDK Diesel Generator Set Data

Genset Model	FDK-CG1000/H1
Prime Power	900KW/1125KVA
Standby Power	1000KW/1250KVA
Output Frequency / Rated speed	50Hz/1500rpm
Rated Voltage	230V/400V

Engine Make	Cummins ONAN
Engine Model	KTA38-G9
Alternator model	Stamford HCI634K
Control System	DSE7320
Phase	Three

(1) **Prime power:** The rating is available for an unlimited of annual operating hours in variable load applications, in accordance with ISO8528-1.A 10% overload is available for a period of 1 hour within 12-hour period of operation, in accordance with ISO 3046-1.

(2) **Standby power:** The rating is applicable for supplying emergency power in variable load applications for up to 200 hours per year in accordance with ISO8528-1. Overload is not allowed.

(3) **Rated voltage:** available with customer requirement.

### Engine Specifications (DETAILED in APPENDIX)

Engine Model	KTA38-G9
Engine Manufacturer	Cummins ORIGINAL INDIA
Cylinder quantity	12
Cylinder Arrangement	60° Vee
Cycle	4

Aspiration	Turbo-charged
Bore x Stroke (mm x mm)	159x159
Displacement	37.8L
Compression Ratio	13.9:1
Prime power / Speed (KW/RPM)	Not available
Standby power/ Speed (KW/RPM)	1089kw/1500



ISO9001:2008

FDK reserves the right to change the specifications and designs without notice.

Type Injection System	Cummins PT Direct Injection	Fuel Consumption at 100% load (g/KWh)	199 at 1500rpm
Piston Speed	7.9m/s	Starter motor	DC24V
Friction Energy Output	86kw	Low idle	725-775rpm
Total Lubrication System Capacity	135L	Coolant Capacity (L)	124

## Alternator Specifications

Alternator model	HCI634K	Number of phase	3
Alternator manufacturer	STAMFORD	Rated voltage	400V (Available with custom requirements)
Exciter type	Single bearing, Brushless, Self-excited	Power factor	0.8
Rated output prime power	1130KVA	Voltage regulation NL-FL	±1%
Rated speed	1500 rpm	Insulation grade	H
Rated frequency	50Hz	Protection grade	IP23

**Alternator option: Leroy Somer, MECC, Marathon, Engga, Faraday**

## Control System DSE7320 (DETAILED in INSTRUCTION)

DSE7320 is an advanced control module based on micro-processor, containing all necessary functions for protection of the genset and the breaker control. It can monitor the mains supply, breaker control and automatically start the engine when the mains are abnormal. Accurately measure various operational parameters and display all values and alarms information on the LCD. In addition, the control module can automatically shut down the engine and indicate the engine failure.

### FEATURES

- ♦ Microprocessor control, with high stability and credibility.
- ♦ Monitoring and measuring operational parameters of the mains supply and genset.
- ♦ Indicating operation status, fault conditions, all parameters and alarms.
- ♦ Multiple protections; multiple parameters display, like pressure, temp. etc.
- ♦ Manual, automatic and remote work mode selectable.
- ♦ Real time clock for time and date display, overall runtime display, 250 log entries.
- ♦ Overall power output display.
- ♦ Integral speed/frequency detecting, telling status of start, rated operation, overspeed etc.
- ♦ Communication with PC via RS485 OR RS232 interface, using MODBUS protocol.

## Soundproof Enclosure Specification

FDK silent generator is designed by professional acoustic engineers based on years of experience. Now we can make the noise of the generator less than 80-85dB(A) at 1m, or 70-75dB(A) at 7m, 60-65dB(A) at 15m.

### FEATURES

- ♦ Multi-way air intake and exhaust guarantee the power performance of the generator.
- ♦ Large-scale impedance combined type silencer effectively reduce noise of the generator.
- ♦ Internal high performance rubber damper and flexible materials reduce vibration.
- ♦ Base mounted fuel tank supports the generator running for 8 hours.



ISO9001:2008

FDK reserves the right to change the specifications and designs without notice.

## Optional

Generator set	Alternator	Low environment Temp	ATS
<input type="checkbox"/> Open generator set <input type="checkbox"/> Silent generator set <input type="checkbox"/> Trailer generator set <input type="checkbox"/> ABB MCCB circuit breaker	<input type="checkbox"/> Stamford <input type="checkbox"/> Marathon <input type="checkbox"/> Mecc Alte <input type="checkbox"/> Leroy Somer <input type="checkbox"/> Farady <input type="checkbox"/> Engga	<input type="checkbox"/> Water heater <input type="checkbox"/> Oil heater <input type="checkbox"/> Battery heater	<input type="checkbox"/> CHINT <input type="checkbox"/> SCHNEIDER <input type="checkbox"/> ABB
Fuel system	Control system	Voltage	Synchronized system
<input type="checkbox"/> 12hrs base tank <input type="checkbox"/> 24hrs base tank <input type="checkbox"/> Dual wall base fuel tank <input type="checkbox"/> Outside fuel tank	<input type="checkbox"/> AMF function <input type="checkbox"/> ATS control cabinet <input type="checkbox"/> DSE7320 <input type="checkbox"/> DSE7510 <input type="checkbox"/> GU620A	<input type="checkbox"/> 415/240V <input type="checkbox"/> 400/230V <input type="checkbox"/> 380/220V <input type="checkbox"/> 220/127V <input type="checkbox"/> 200/115V	<input type="checkbox"/> CHINT Cabinet <input type="checkbox"/> SCHNEIDER Cabinet <input type="checkbox"/> DSE8610 Module <input type="checkbox"/> COMAQ Module <input type="checkbox"/> DEIF Module

## Dimension & Weight

### Open

Overall Size: LxWxH (mm)	4600x1900x2350
Weight (kg)	8300

### Soundproof Version

Overall Size: LxWxH (mm)	6000x2300x2550
Weight (kg)	11000

## Sales Promises

- ◆ FDK provides a full line of brand new and high quality products. Each and every unit is strictly factory tested before shipment.
- ◆ Quality warranty is according to our standard conditions: 12 months from BL date or 1000 running hours, whichever comes first.
- ◆ Service and parts are available from FDK or distributors in your location.
- ◆ FDK guarantee use **BRAND NEW & GENUINE MACHINE.**





# KTA38-G9 Advantage Data Sheet

Cummins Inc. Columbus, Indiana 47201

Curve Number: <b>FR- 6454</b>	Engine Critical Parts List: <b>CPL -8586</b>	Date: <b>12May04</b>
Displacement : <b>37.8 litre (2300 in<sup>3</sup>)</b>	Bore : <b>159 mm (6.25 in.)</b>	Stroke : <b>159 mm (6.25 in.)</b>
No. of Cylinders : <b>12</b>	Aspiration : <b>Turbocharged and Aftercooled</b>	

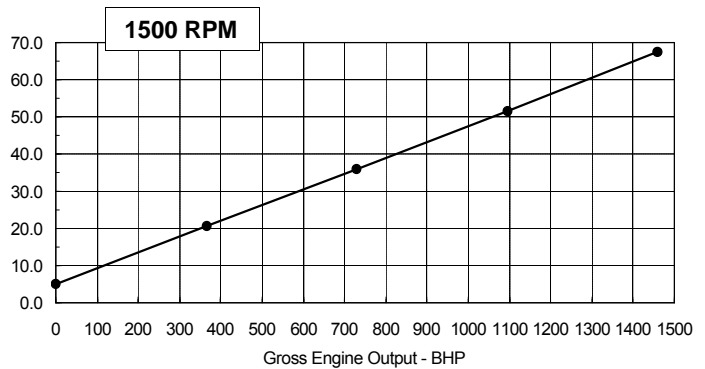
## Emergency Standby Ratings for Application in Corporate Generator Sets Only

Engine Speed RPM	Standby Power	
	kWm	BHP
1500	1089	1460

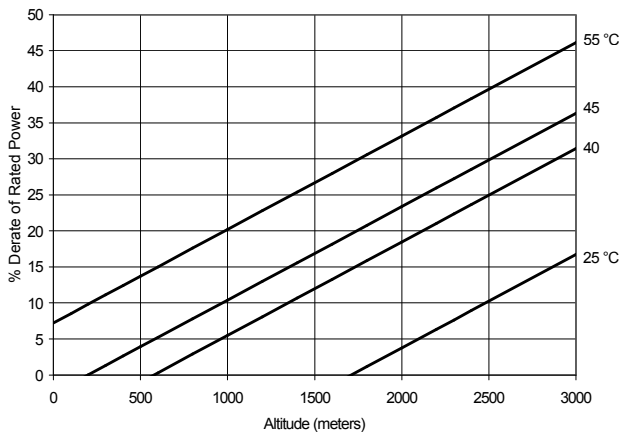
## Engine Performance Data @ 1500 RPM:

OUTPUT POWER			FUEL CONSUMPTION			
%	kWm	BHP	kg/ kWm-h	lb/ BHP-h	Litre/ hour	U.S. Gal/ hour
<b>STANDBY POWER</b>						
100	1089	1460	0.199	0.328	256	67.4
75	817	1095	0.204	0.335	196	51.7
50	545	730	0.213	0.350	137	36.0
25	272	365	0.246	0.403	79	20.7

Liter / hour



## Power Derate Curve @ 1500 RPM:



### Operation At Elevated Temperature and Altitude:

For sustained operation above these conditions, derate by an additional 4% per 300 m (1000 ft), and 10% per 10° C ( 5.5% per 10 deg F).

**CONVERSIONS:**(litres = U.S. Gal x 3.785) (U.S.Gal = litres x 0.2642)

Data Subject to Change Without Notice

These guidelines have been formulated to ensure proper application of generator drive engines in A.C. generator set installations.

**STANDBY POWER RATING:** Applicable for supplying emergency power for the duration of the utility power outage. No overload capability is available for this rating. Under no condition is an engine allowed to operate in parallel with the public utility at the Standby Power rating. This rating should be applied where reliable utility power is available. A Standby rated engine should be sized for a maximum of an 70% average load factor and 200 hours of operation per year. This includes less than 5 hours per year at the Standby Power rating. Standby ratings should never be applied except in true emergency power outages. Negotiated power outages contracted with a utility company are not considered an emergency.

Reference AEB 10.47 for determining Electrical Output.

Data shown above represent gross engine performance capabilities obtained and corrected in accordance with ISO-3046 conditions of 100 kPa (29.53 in Hg) barometric pressure [110 m (361 ft) altitude], 25 °C (77 °F) air inlet temperature, and relative humidity of 30% with No. 2 diesel or a fuel corresponding to ASTM D2. Derates shown are based on 15 in H<sub>2</sub>O air intake restriction and 2 in Hg exhaust back pressure.

The fuel consumption data is based on No. 2 diesel fuel weight at 0.85 kg/litre (7.1 lbs/U.S. gal). Power output curves are based on the engine operating with fuel system, water pump and lubricating oil pump; not included are battery charging alternator, fan, optional equipment and driven components.

Data Status: Pre- Production

Data Tolerance:

Chief Engineer:

[www.fdkenergy.com](http://www.fdkenergy.com)



# KTA38-G9 Advantage Data Sheet

Cummins, Inc. Columbus, Indiana 47201

## Cummins, Inc. Engine Data Sheet

ENGINE MODEL : KTA38-G9 CONFIGURATION NUMBER: D233031DX02

DATA SHEET : DS-6454

Date : 12May04

PERFORMANCE CURVE : FR-6454

### INSTALLATION DIAGRAM

• Fan to Flywheel : 3383897

### CPL NUMBER

• Engine Critical Parts List : 8586

### GENERAL ENGINE DATA

Type.....	4-Cycle; 60° Vee; 12-Cylinder Diesel
Aspiration.....	Turbocharged and Aftercooled
Bore x Stroke..... — mm x mm (in x in)	159 x 159 (6.25 x 6.25)
Displacement..... — litre (in <sup>3</sup> )	2300 (37.8)
Compression Ratio.....	13.9 : 1
Dry Weight	
Fan to Flywheel Engine..... — kg (lb)	4300 (9482)
Wet Weight	
Fan to Flywheel Engine..... — kg (lb)	4536 (10002)
Moment of Inertia of Rotating Components	
• with FW 6001 Flywheel..... — kg • m <sup>2</sup> (lb <sub>m</sub> • ft <sup>2</sup> )	10.4 (248)
• with FW 6011 Flywheel..... — kg • m <sup>2</sup> (lb <sub>m</sub> • ft <sup>2</sup> )	20.8 (493)
Center of Gravity from Front Face of Block..... — mm (in)	980 (38.6)
Center of Gravity Above Crankshaft Centerline..... — mm (in)	279 (11)
Maximum Static Loading at Rear Main Bearing..... — kg (lb)	908 (2000)

### ENGINE MOUNTING

Maximum Bending Moment at Rear Face of Block..... — N • m (lb • ft) 6100 (4500)

### EXHAUST SYSTEM

Maximum Back Pressure at 1500 RPM (Standby Power)..... — mm Hg (in Hg) 76 (3)

### AIR INDUCTION SYSTEM

Maximum Intake Air Restriction	
• with Dirty Filter Element..... — kPa (in H <sub>2</sub> O)	6.2 (25)
• with Clean Filter Element..... — kPa (in H <sub>2</sub> O)	3.7 (15)

### COOLING SYSTEM

Coolant Capacity — Engine only..... — litre (US gal)	124 (32.7)
— with HX 6076 Heat Exchanger..... — litre (US gal)	199 (52.7)
Minimum Pressure Cap (for Cooling Systems with less than 2m [6 ft.] Static Head)..... — kPa (psi)	69 (10)
Maximum Static Head of Coolant Above Engine Crank Centerline..... — m (ft)	18.3 (60)
Thermostat (Modulating) Range..... — °C (°F) ..	82-93 (180-200)
Maximum Coolant Friction Head External to Engine — 1500 rpm..... — kPa (psi)	48 (7)
Maximum Top Tank Temperature for Standby..... — °C (°F)	104 (220)
Maximum Raw Water Flow @ 90 F to HX6076 Heat Exchanger..... — liter/min (US gpm)	409 (108)
Maximum Raw Water Inlet Pressure at HX 6076 Heat Exchanger..... — kPa (psi)	345 (50)

### LUBRICATION SYSTEM

Oil Pressure @ Idle Speed..... — kPa (psi)	138 (20)
@ Governed Speed..... — kPa (psi)	310-448 (45-65)
Maximum Oil Temperature..... — °C (°F)	121 (250)
Oil Capacity with OP6023 Oil Pan: Low - High..... — litre (US gal)	114-87 (30-23)
Total System Capacity (with Combo Filter)..... — litre (US gal)	135 (35.7)

